



Multi -Tiered Systems of Support

PRESENTATION TO THE SCHOOL BOARD

Presented by:

Char Hutson, Restorative Justice Program Manager

Chandra Cooper, Senior Director of MTSS

Naomi Montelongo, Program Administrator of MTSS

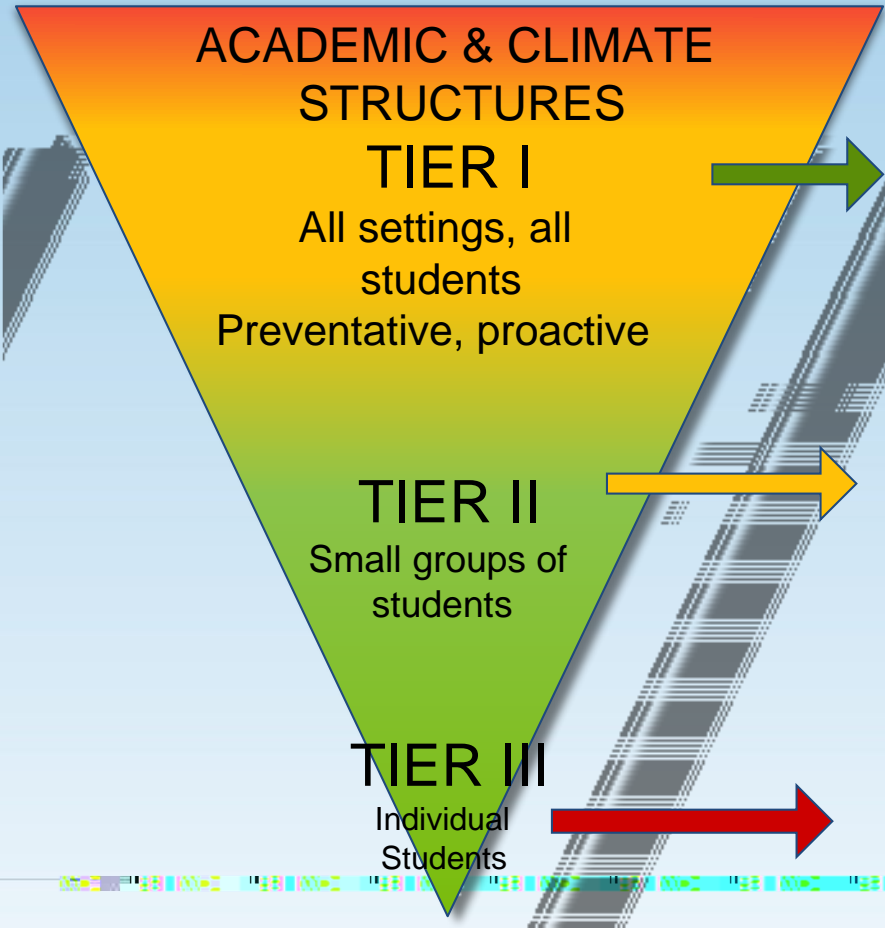
Brenda Martinek, Chief of Student Support Services

June 11, 2020





Multi-Tiered System of Support FOR STUDENT SUCCESS



- Priority Standards, GVC-Core Curriculum
 - Learning Targets, Lesson/Unit Planning
 - Professional Learning Communities (PLCs)
 - Team Generated Formative Assessments
 - Positive Behavior Instruction Supports (PBIS)
 - Social Emotional Learning (SEL) & Trauma Informed Practices
 - Racial Equity and Social Justice
 - Restorative Justice
- Evidence-based interventions for small groups of students
- Progress monitoring
 - Student Intervention Team (SIT) for behavior
 - Professional Learning Communities (PLCs)
 - Restorative Justice
 - Racial Equity and Social Justice
- Evidence-based interventions for individual students
- Progress monitoring
 - Student Intervention Team (SIT) for academics & behavior
 - Function of Behavior & Behavior Support Plans (FBA/BSP)
 - Restorative Justice
 - Racial Equity and Social Justice

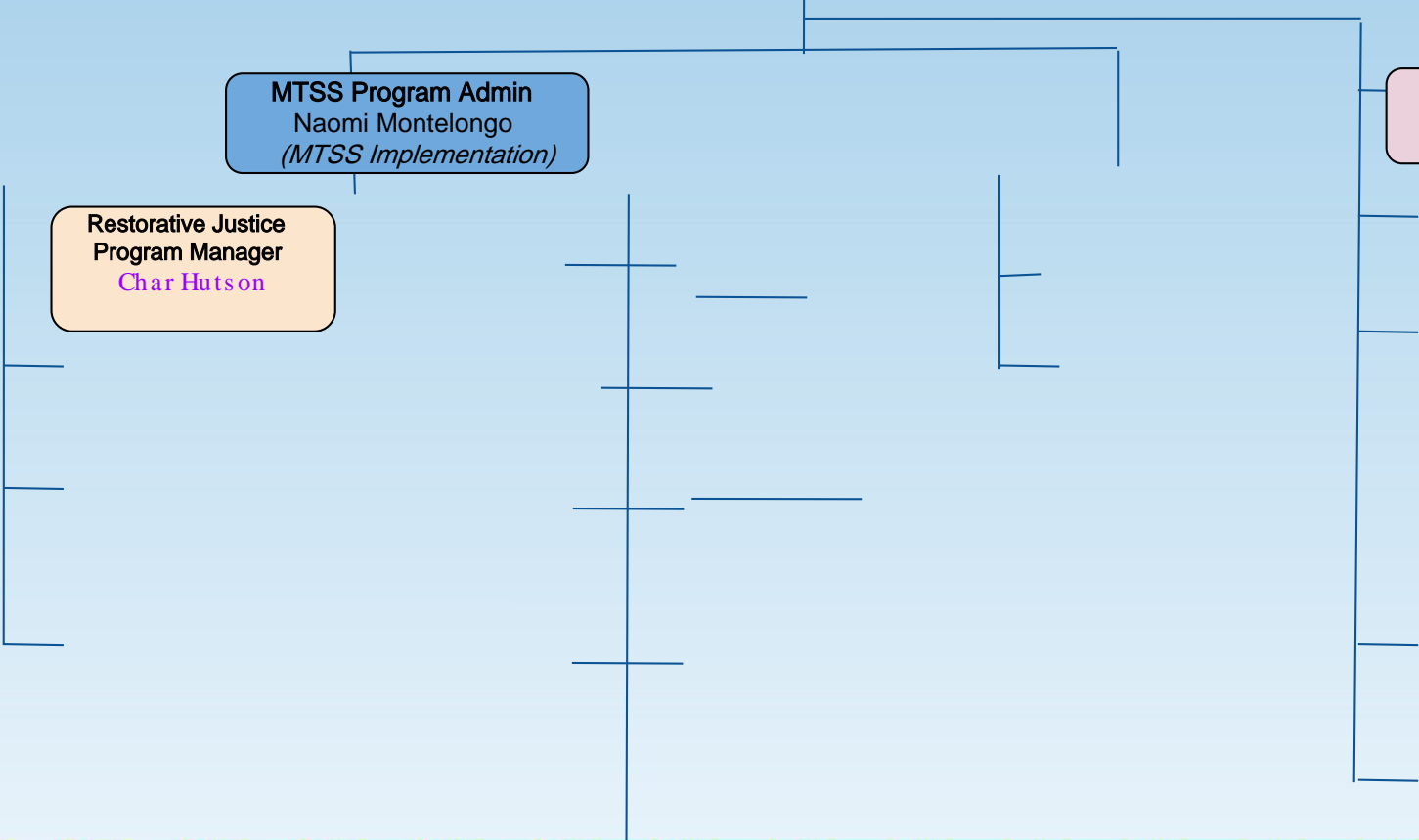
Senior Director
Chandra Cooper

Portland Public Schools Multi -Tiered System of Support

MTSS Program Admin
Naomi Montelongo
(MTSS Implementation)

Administrative
Assistant
Krysti Vang

Restorative Justice
Program Manager
Char Hutson



How MTSS TOSAs Support Schools

Direct School Team Structure Development & Support

- Instructional Leadership Team
 - mission/vision creation
 - master schedule support
 - Fidelity Implementation Tool (FIT) co-facilitation
- Student Intervention Team (SIT)
 - Process support
 - Organizational support
- Climate Team
 - CR-TFI facilitation
 - RESJ alignment
 - Action planning support
 - PBIS
- Professional Learning Communities
 - Process support

Providing Professional Development

District Level

- Coaching Academy Support
- FBA/BSP
- SIT
- PBIS
- Effective Classroom Practices
- School Climate Specialist
- Job-Alike
- MTSS 101

School Level

- Staff Meeting PD

Teacher Level

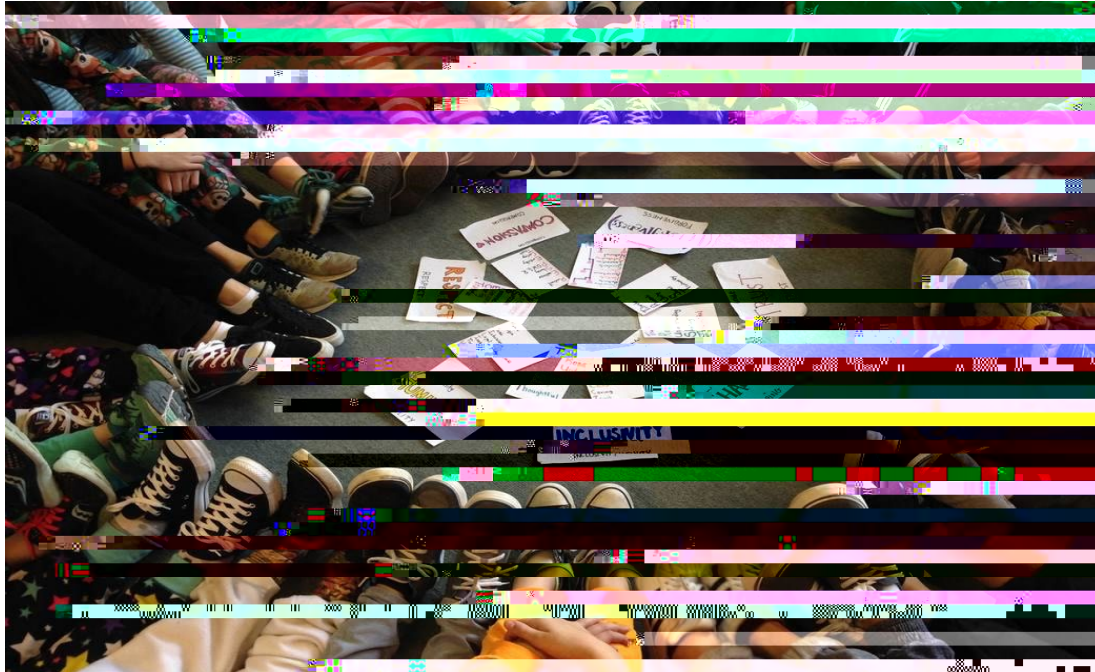
- Classroom Coaching
- PLC grade level team support

System Development

- Research on best practices
- RESJ alignment within MTSS
- PD Development
- Cross-department alignment and collaboration (i.e. Student Success and Health, Special Education, Office of Teaching and Learning)

This chart includes baseline data for all 87 PPS schools and participating programs. The initial FITs took place in Spring 2019 for

Restorative Justice



The Restorative Justice Team

Char Hutson Program Manager	9-12
Sarah Holm RJ Specialist	K-5 and K-8
Keela Tillery RJ Specialist	K-5 and 6-8
Jasmine Springs RJ Specialist	K-5 and K-8

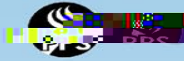
Our Alignment to other departments

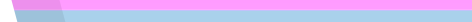
Racial Equity and Social Justice

- Implicit/Explicit Bias through the RJ lens
- Response to Hate/Discriminatory Incidents
- Teacher/School-Wide Training
- Leading with Racial Equity and Supporting Social Justice

Student Success and Health

- Students and Families of Color
- LGBTQIA+ Supports for Students
- Title IX
- Mental Health / Drug and alcohol supports
- Rapid Response Team
- Student Success Center
- Counselling





MTSS Implementation Training

2018-2019

Central Office, Building Administrators, District TOSAs,
Coaches, Mentors

2019-2020

Cohort 1 = TSI, CSI, Title Schools + 8 more (41)

2020-2021

Cohort 2 = All other schools (45)

MTSS Coaching Academy Group A
Trainer: Luis Cruz

MTSS Coaching Academy Group B

2020-2021 Changes and





Questions